

CABLE 311 RF: RF CABLE ASSEMBLY, IPEX MHF IV PLUG + RP SMA BULKHEAD JACK WITH O-RING + 0.81MM CABLE - 6GHz

SPECIFICATIONS:

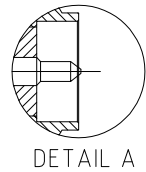
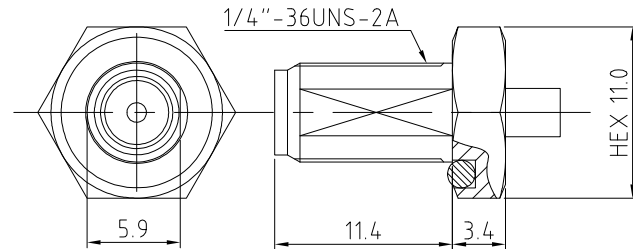
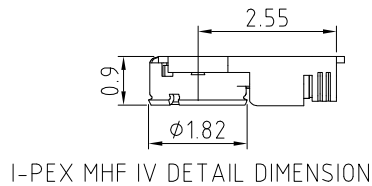
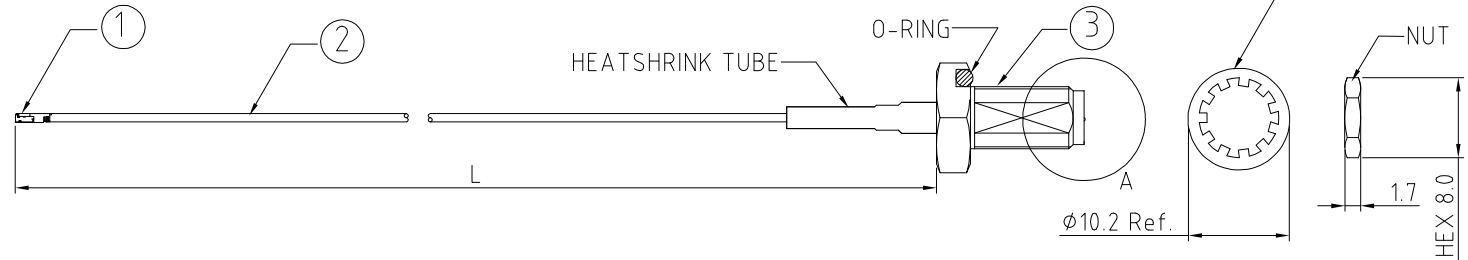
1. I-PEX MHF IV PLUG (20448-001R-081).
2. ϕ 0.81MM COAXIAL CABLE, COLOR: GRAY.
3. RP SMA ST BULKHEAD JACK WITH O-RING, GOLD. P/N: RFCT-SMA045-F08.

NOTES:

1. THE ORIENTATION OF CONNECTORS ON DRAWING IS FOR REFERENCE ONLY, IF THE ORDER IS LEFT BLANK THE CONNECTOR WILL NOT HAVE FIXED ORIENTATION.
2. FIXED ORIENTATION IS SUGGESTED FOR CABLE LENGTH 25MM TO 100MM. PLEASE SPECIFY THE FIXED ORIENTATIONS FROM THE ORDER CODE (F1, F2, ETC)
3. CONTACT GRAD CONN IF THE ORIENTATION YOU REQUIRE IS NOT SHOWN.
4. WORKING FREQUENCY RANGE: DC-6GHz

USAGE PRECAUTIONS: CABLES USING 'MICRO' COAX ARE DELICATE:

- (i) HANDLE WITH CARE.
- (ii) DO NOT TWIST; APPLY EXCESSIVE FORCES OR SHARP BENDS TO THE CABLE. DO NOT FORCEFULLY DEFORM WIRES.
- (iii) CONSULT CONNECTOR MANUFACTURER'S DATASHEETS FOR DETAILED NOTES ON HANDLING INSTRUCTIONS.



HOW TO ORDER

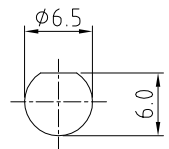
CABLE 311 RF - XXX - XX - X - 1

CABLE OPTIONS:
1 = ϕ 0.81MM CABLE, COLOR: GRAY

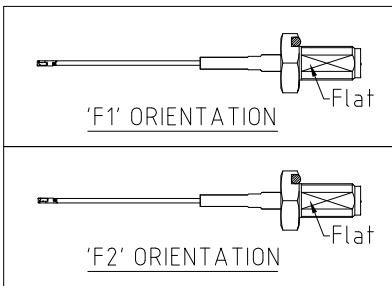
"L" LENGTH IN MM
eg: 100MM = 100
(MIN. 025-MAX.400
STANDARD = 100, 150, 200)
Tolerance: <50mm : \pm 2mm.
51-200mm: \pm 5mm.
201-400mm: \pm 7mm.

WASHER AND NUT OPTIONS:
BLANK = SEPARATELY PACKED (STANDARD)
A = ASSEMBLED WITH CONNECTOR

ORIENTATION OPTIONS:
BLANK = DOES NOT HAVE A FIXED ORIENTATION
F1 = IPEX CONNECTION DOWN (L=25-200MM)
F2 = IPEX CONNECTION UP (L=25-200MM)
(SEE NOTES 1, 2, 3 AND DIAGRAMS FOR MORE INFORMATION)



RECOMMENDED SMA MOUNTING HOLE



REV. DATE & DRN TO 28/05/18 - NYW RELEASE

Scale: NTS	THIRD ANGLE	Unstated: .X, .XX, .XXX ANGLES	Tolerances: N/A, N/A, N/A	Material: SEE NOTE
Drawn: NYW				
App'd: XXX	Title: CABLE ASSEMBLY	NOT TO SCALE		
Date: 28 MAY '18	Revision: 1.0	Unit: mm		

www.gradconn.com

THIS DRAWING IS CONFIDENTIAL AND MUST NOT BE COPIED OR DISCLOSED WITHOUT WRITTEN CONSENT

Type: Cable 311 RF
CABLE 311 RF
Drawing Number:
Sheet 1 of 1
Drawing © E and O E